

DESCRIPTION

These nozzles use circular chains with small carbide plates to clean and scarify pipes in an innovative and extremely effective way.

MAIN FEATURES









The chain must be the same size as the diameter of the pipe in which it is to be used; it is then attached to the rotating head of the nozzle. The carbide plates smooth out the pipe walls and attack any intruding or deposited elements such as roots, limescale and rust.

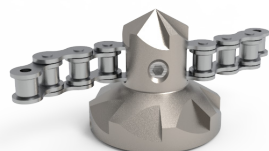
This solution is extremely effective for very demanding cases such as the removal of poorly executed liners or trunks, or cleaning limescale from cast iron columns. SOLO nozzles are sold in a package that includes nozzle, 2 sets of chains and centralizers for multiple diameters.

RECOMMENDATIONS

For effective and efficient operation, the nozzles must be specially configured (with regard to the size of individual holes), depending on the characteristics of the pump (flow rate and pressure) and the cross-section, length and type of high-pressure hose. This information must be provided by the customer at the time of order and must be compatible with the technical specifications of each individual nozzle. The operator must choose a working pressure compatible with the pipeline conditions: high working pressure values could cause structural damage to the pipe walls.

TECHNICAL SPECIFICATIONS

Kit Part No.		Ø x L	 kg					 lit/min	 mm	Inserts
		mm	kg							
VALK1A2.01	1/2"	36 x 60	0,3 (Nozzle)	6 x M4	25°	3 x M4	90°	60 - 160	70 - 100	Steel
VALK1A2T.01	1/2"	36 x 60	0,3 (Nozzle)	6 x M4	25°	3 x M4 turbine	90°	60 - 160	70 - 100	Steel
VALK3A2.01	3/4"	55 x 83	1,0 (Nozzle)	4 x M6	20°	3 x M6	90°	80 - 240	100 - 150	Ceramic
VALK3A2T.01	3/4"	55 x 83	1,0 (Nozzle)	4 x M6	20°	3 x M6 turbine	90°	80 - 240	100 - 150	Ceramic
VALK6A2.01	1"	70 x 140	2,6 (Nozzle)	6 x M6	20°	3 x M6	90°	150 - 270	150 - 300	Ceramic
VALK6A2T.01	1"	70 x 140	2,6 (Nozzle)	6 x M6	20°	3 x M6 turbine	90°	150 - 270	150 - 300	Ceramic



Chain Head



Carbide Milling Head



SOLO - Exploded View

NOZZLES

- Rotating Nozzle (without inserts)
- Calibration
- Turbine Nozzle (without inserts)
- Calibration Turbine

HEADS

- Chain Head (with chains)
- Carbide Milling Head
- SOLO Head

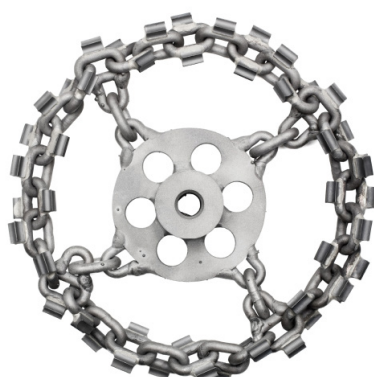
CHAINS

- Avian Chain Sets
- SOLO Chain DN70
- SOLO Chain DN100
- SOLO Chain DN150
- SOLO Chain DN200
- SOLO Chain DN225

CENTRALIZER

- DN70 Ring
- DN100 Ring
- DN125 Ring
- DN150 Ring
- Ext. Guide DN150÷200
- Ext. Guide DN150÷300
- Ext. Guide DN200÷450
- Plastic case with tools

	1/2" F	VALK1A2.01 VALK1A2T.01	3/4" F	VALK3A2.01 VALK3A2T.01	1" F	VALK6A2.01 VALK6A2T.01
Rotating Nozzle (without inserts)	75510.17R	•	75510.360R	•	75510.260R	•
Calibration	TA.75510.17R	•	TA.75510.360R	•	TA.75510.260R	•
Turbine Nozzle (without inserts)	75510.17T	•	75510.360T	•	75510.260T	•
Calibration Turbine	TA.75510.17T	•	TA.75510.360T	•	TA.75510.260T	•
Chain Head (with chains)	75527.25C1	○ ○	75527.27C1	○ ○	75527.30C	○ ○
Carbide Milling Head	75527.25B	○ ○	75527.27B	○ ○	75527.30B	○ ○
SOLO Head	75527.25D	• •	75527.27D	• •	75527.30D	• •
Avian Chain Sets	75001.10A-K1	○ ○	75001.11-K1	○ ○	75001.15-K1	○ ○
SOLO Chain DN70	50.CC070-8	• •				
SOLO Chain DN100	50.CC100-8	• •	50.CC100-12	• •		
SOLO Chain DN150			50.CC150-12	• •	50.CC150-12	• •
SOLO Chain DN200					50.CC200-12	• •
SOLO Chain DN225					50.CC225-12	○ ○
DN70 Ring	5305.12A	• •				
DN100 Ring	5305.12B	• •	5305.34B	• •		
DN125 Ring			5305.34A	○ ○		
DN150 Ring			5305.34C	• •		
Ext. Guide DN150÷200					5305.10	• •
Ext. Guide DN150÷300			5023.02	○ ○		
Ext. Guide DN200÷450					5023.01-1	○ ○
Plastic case with tools		• •		• •		• •



SOLO Chain



Centralizer Rings for Aviano and SOLO Nozzles